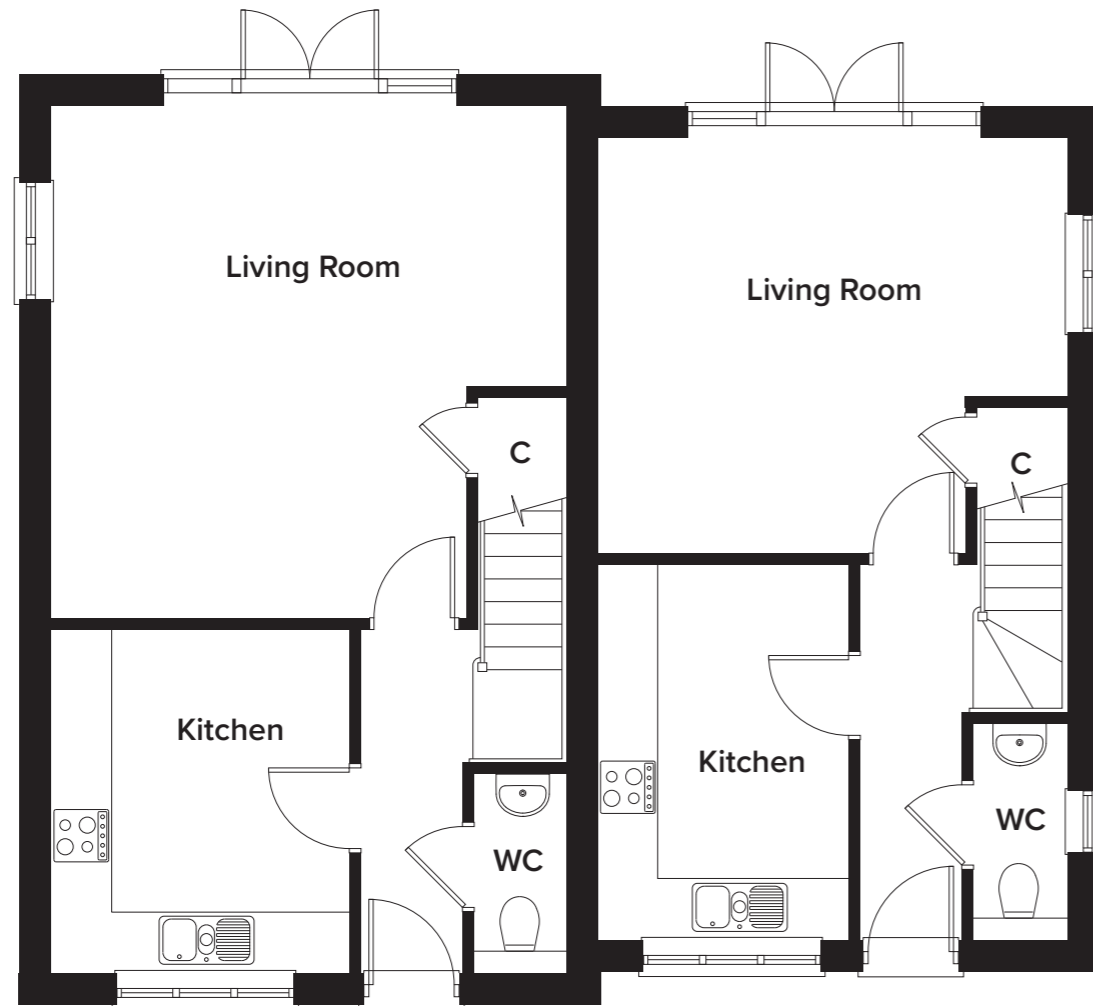


The Old Orchard, Sandhurst Plots 1 and 2

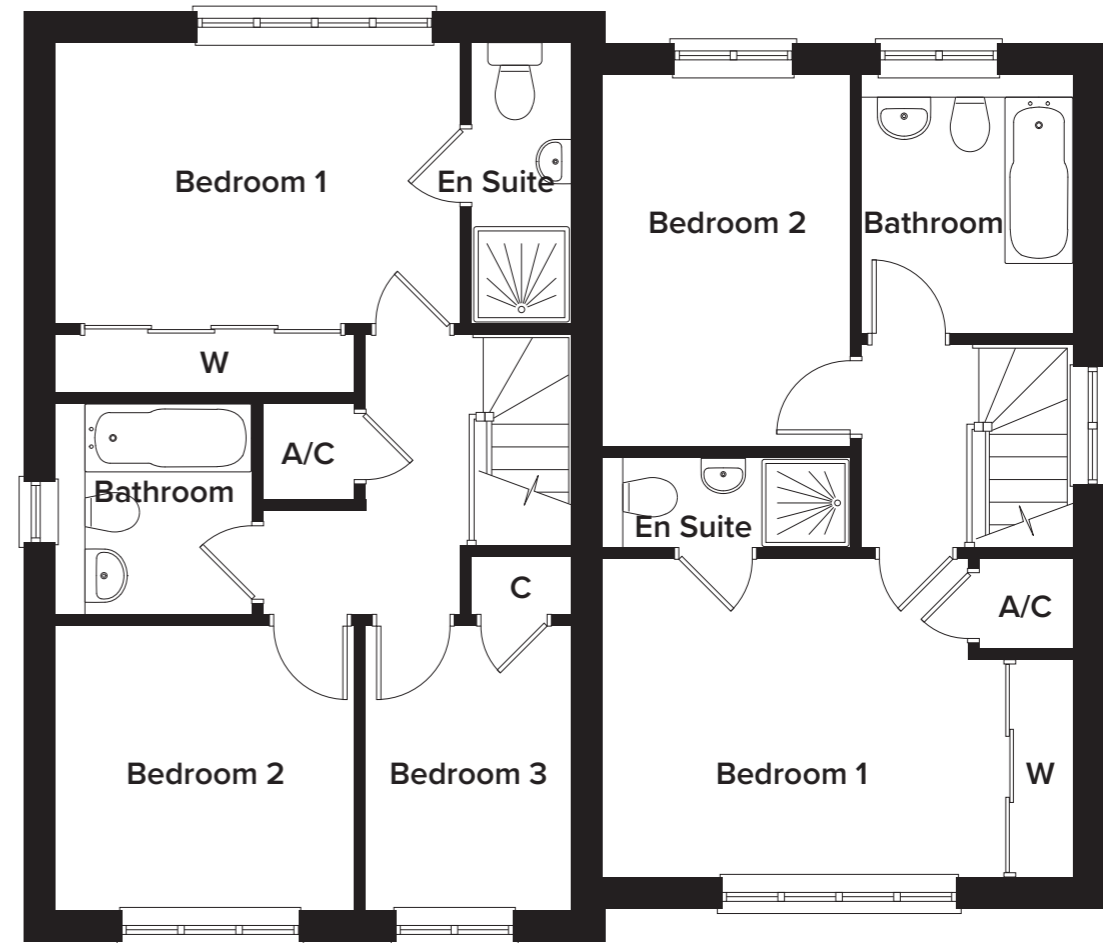


Ground Floor PLOT 2

Kitchen
3.5m x 3.1m (11' 6" x 10' 2")
Living Room
5.3m x 5.3m (17' 4" x 17' 4")

Ground Floor PLOT 1

Kitchen
2.6m x 3.9m (8' 6" x 12' 9")
Living Room
4.8m x 4.2m (15' 9" x 13' 9")



First Floor PLOT 2

Bedroom 1 - dim's + wardrobes
4.2m x 2.9m (13' 9" x 9' 6")
Bedroom 2
3.1m x 2.9m (10' 2" x 9' 6")
Bedroom 3
2.1m x 2.9m (6' 10" x 9' 6")

First Floor PLOT 1

Bedroom 1 - dim's + wardrobes
3.3m x 4.1m (10' 10" x 13' 6")
Bedroom 2
3.8m x 2.6m (12' 6" x 8' 6")